

# LEGEND LAKE ESTATES

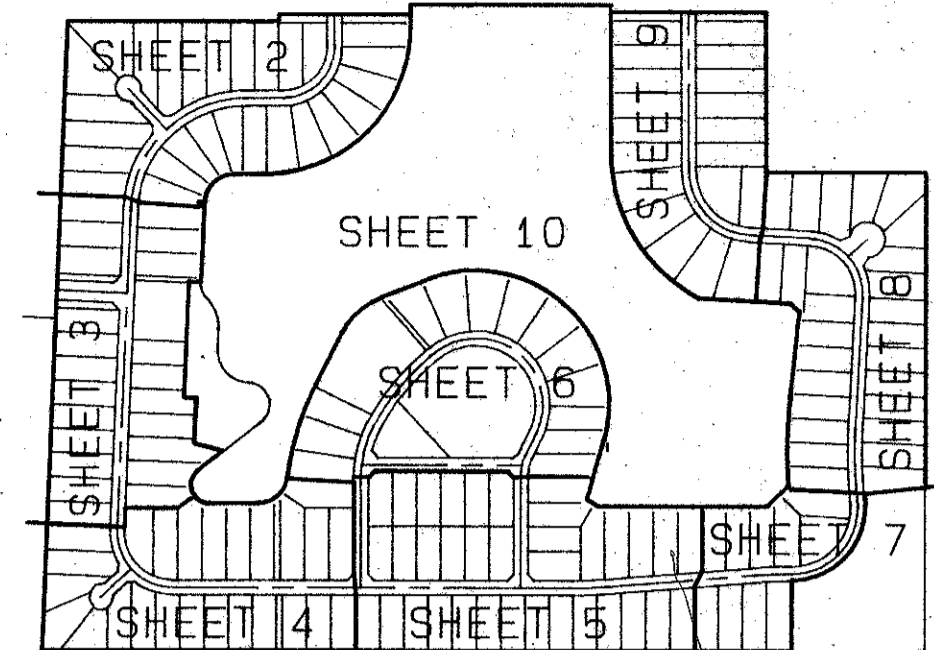
A REPLAT OF A PORTION OF "THE HUNT", P. U. D., PLAT BOOK 32, PAGES 119 THOUGH 125  
SITUATE IN SECTION 30 AND 31, TOWNSHIP 44 SOUTH, RANGE 42 EAST,  
PALM BEACH COUNTY, FLORIDA.

JANUARY, 1992

SHEET 4 OF 10

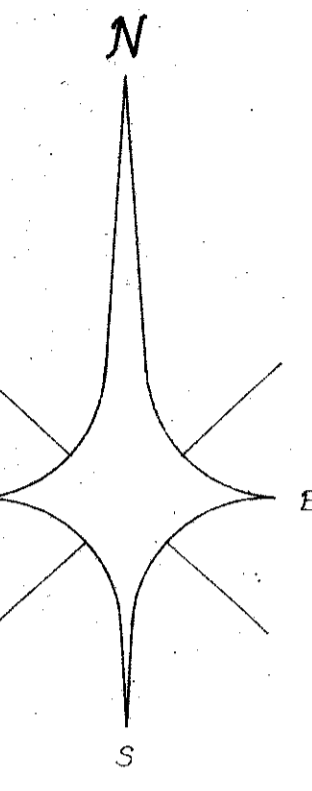
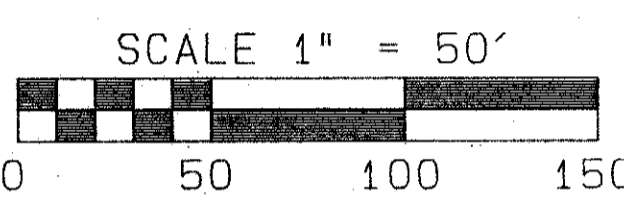
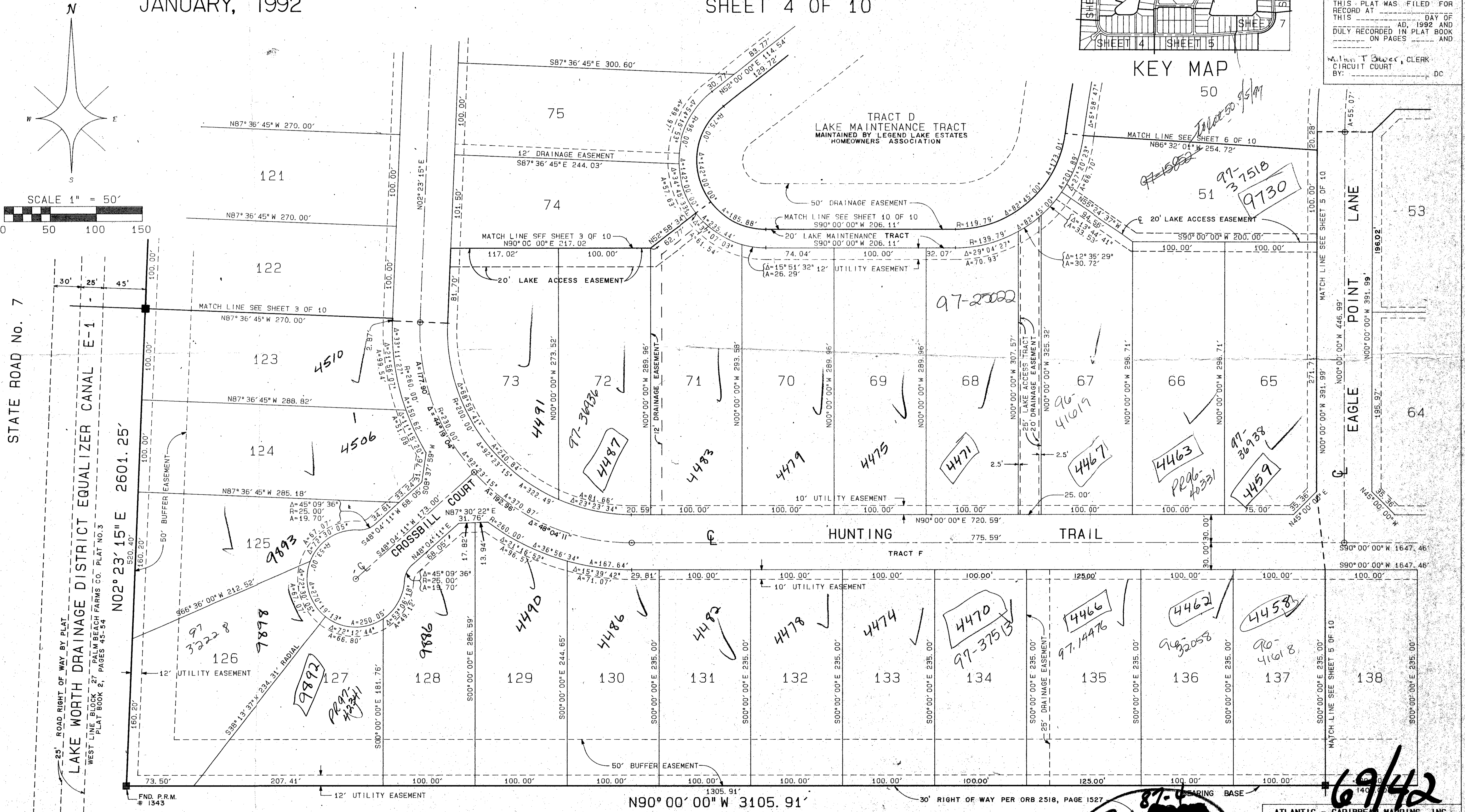
0467-001

42



STATE OF FLORIDA } SS  
COUNTY OF PALM BEACH }  
THIS PLAT WAS FILED FOR  
RECORD AT \_\_\_\_\_ DAY OF  
THIS \_\_\_\_\_ AD, 1992 AND  
DULY RECORDED IN PLAT BOOK  
ON PAGES \_\_\_\_\_ AND  
\_\_\_\_\_

M. L. T. Block, CLERK  
CIRCUIT COURT  
BY: \_\_\_\_\_ DC



SUBDIVISION \* LEGEND LAKE ESTATES  
BOOK 42  
PAGE 42  
FLOOD ZONE B  
QUAD \* 48  
SE  
ZIP CODE 33447  
PUD NAME THE HUNT  
30-31-42

ATLANTIC - CARIBBEAN MAPPING, INC.  
PROFESSIONAL LAND SURVEYORS  
OAK RIDGE BUSINESS PARK  
1860 OLD ONEECHOBE ROAD, SUITE 501  
WEST PALM BEACH, FLORIDA 33411  
(407) 687-8888 - FAX (407) 687-5897

PET. 87-6  
ALLOC. #0001  
COLLECT

RTS/PRD

69/42

0467-001